



24 Chaddesden Close, Dronfield Woodhouse, Dronfield, S18 8QL

Saxton Mee

24 Chaddesden Close Dronfield Woodhouse

£415,000

Favourably located on a small cul-de-sac is this superb detached four bedroomed family home which stands just a short distance from the park, renowned schooling, parks, doctors and pharmacist.

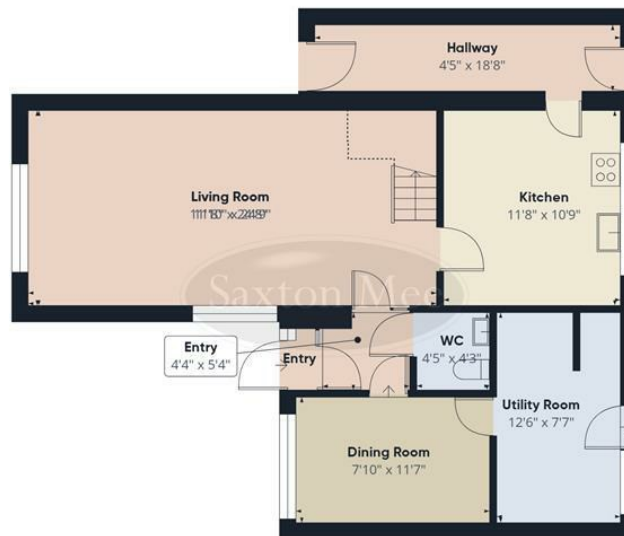
Offered for sale with no upward chain and vacant possession the spacious accommodation is perfect for a family and offers gas central heating and double glazing, briefly comprising: porch, hall, downstairs cloakroom/WC, dining room, large utility, beautifully proportioned living room, fitted kitchen and excellent large side hallway/boot room. First floor landing off which opens three double bedrooms, good size fourth bedroom which is a good size single or small double. Shower room.

Tarmac driveway, car port, private mature rear garden, patio, lawn and herbacious beds.

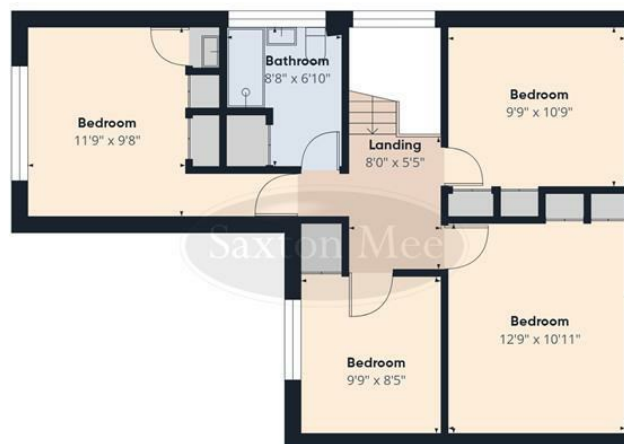
- Superb detached family home
- Sensibly priced reflecting the need of general updating/modernisation
- Gas central heating and uPVC double glazing
- Re-roofed in 2024
- Mature private garden
- Favored cul-de-sac
- No upward chain
- EPC
- Tenure
- Council Tax Band: E







Floor 0



Floor 1



Approximate total area⁽¹⁾

1356 ft²

Reduced headroom

25 ft²

(1) Excluding balconies and terraces.

Reduced headroom

Below 5 ft

Calculations reference the RICS IPMS:
3C standard. Measurements are
approximate and not to scale. This
floor plan is intended for illustration
only.

GIRAFFE360

While we endeavour to make our sales particulars fair, accurate and reliable, they are only a general guide to the property and, accordingly, if there is any point, which is of particular importance to you, please contact the relevant office. The Agents have not tested any apparatus, equipment, fittings or services and so cannot verify they are in working order. The buyer is advised to obtain verification. Please note all the measurement details are approximate and should not be relied upon as exact. All plans, floor plans and maps are for guidance purposes only and are not to scale. Under no circumstances should they be relied upon as exact or for use in planning carpets and other such fixtures, fittings or furnishings. YOUR HOME IS AT RISK IF YOU DO NOT KEEP UP REPAYMENTS ON A MORTGAGE OR OTHER LOAN SECURED ON IT. 'A Life Assurance policy may be requested.' 'Written Quotations of credit terms available on request.'

Banner Cross
T: 0114 268 3241
E: bannercross@saxtonmee.co.uk
www.saxtonmee.co.uk

Dronfield
T: 01246 290992
E: dronfield@saxtonmee.co.uk

Hathersage
T: 01433 650009
E: hathersage@saxtonmee.co.uk

Bakewell
T: 01629 815307
E: bakewell@saxtonmee.co.uk

Matlock
T: 01629 828250
E: matlock@saxtonmee.co.uk

